

**CONCEPTUAL FELLOW  
CABIN LAYOUT  
(SEE SHEET 3)**

**CONCEPTUAL RESORT  
(SEE SHEET 2)**

**PLAN VIEW**  
SCALE: 1" = 400'

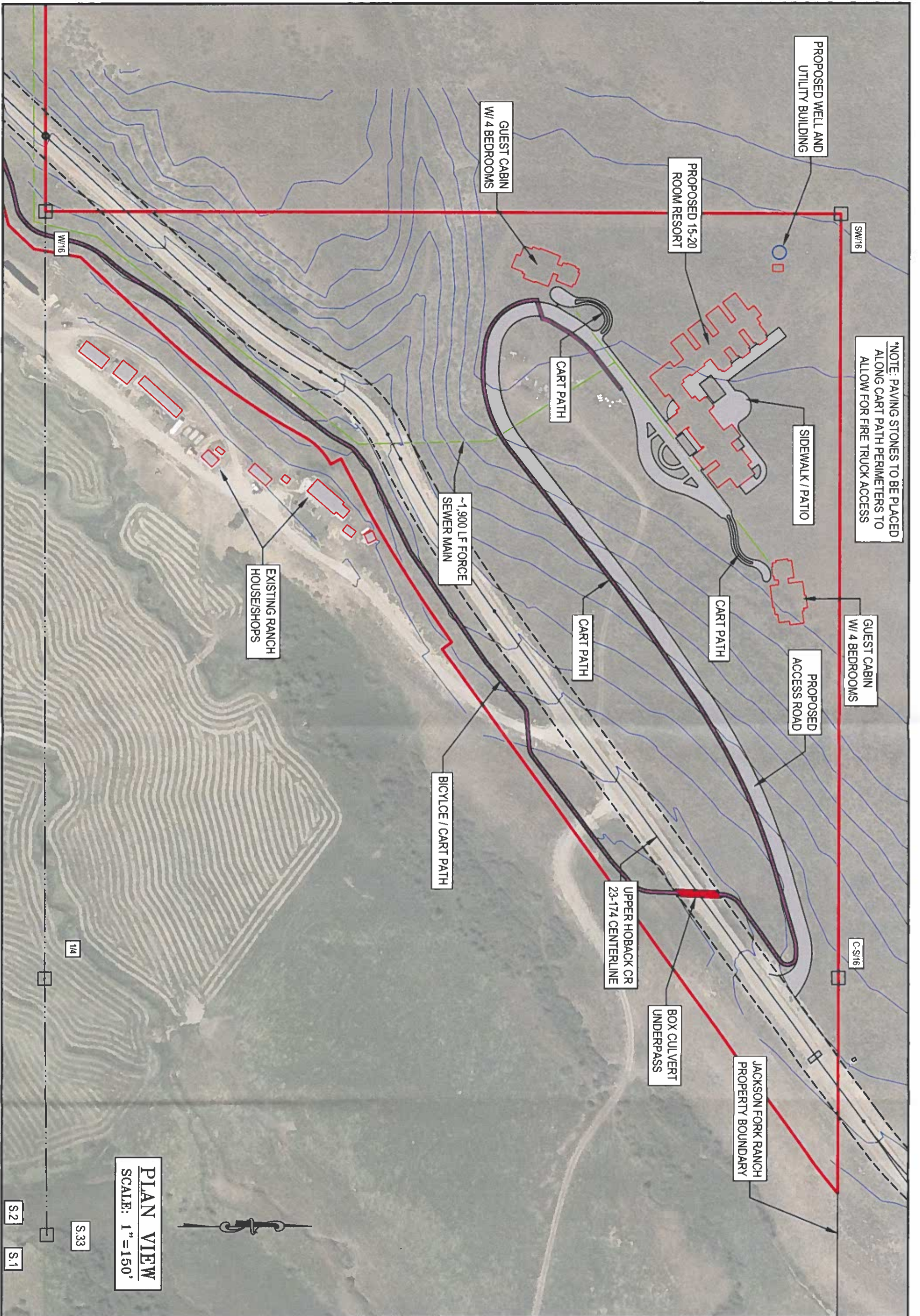


**JACKSON FORK RANCH  
RESORT & CABIN CONCEPTAL LAYOUT**

-PLAN VIEW-  
LOCATED IN  
SUBLETTE COUNTY, WYOMING

**RIO VERDE  
ENGINEERING**  
PINEDALE, WYOMING  
(307) 367-2826  
rloverde@wyoming.com

DESIGNED BY:  
DRAWN BY: MTJ  
CHECKED BY:  
DATE: 10/6/21  
REV:  
JOB NO: 4474  
PAGE: 1 OF 3



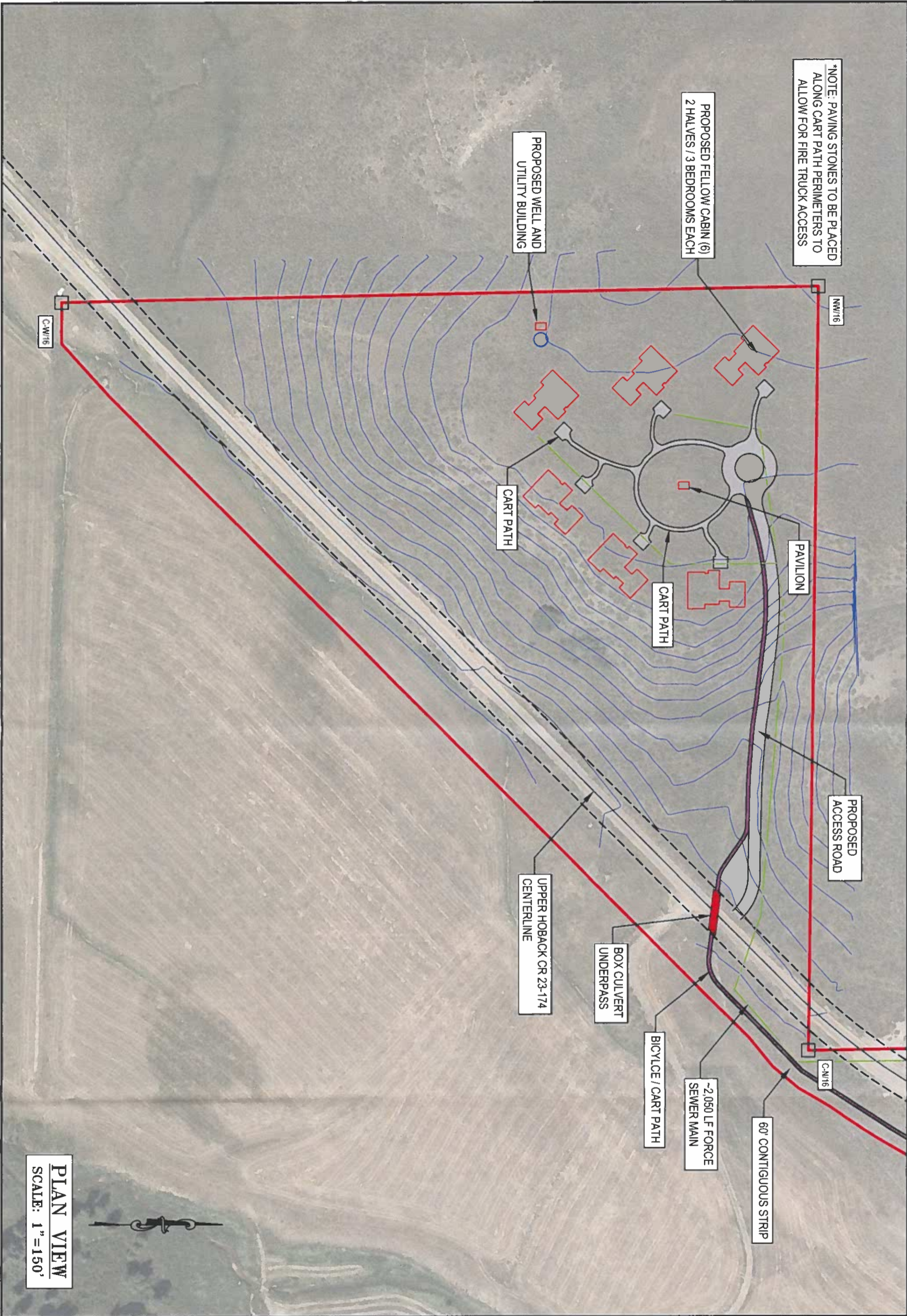
NOTE: PAVING STONES TO BE PLACED ALONG CART PATH PERIMETERS TO ALLOW FOR FIRE TRUCK ACCESS

**PLAN VIEW**  
SCALE: 1" = 150'

**JACKSON FORK RANCH  
RESORT & CABIN CONCEPTAL LAYOUT**  
-PLAN VIEW-  
LOCATED IN  
SUBLETTE COUNTY, WYOMING

**RIO VERDE  
ENGINEERING**  
PINEDALE, WYOMING  
(307) 367-2826  
rioverde@wyoming.com

DESIGNED BY:  
DRAWN BY: MTJ  
CHECKED BY:  
DATE: 10/6/21  
REV:  
JOB NO: 4474  
PAGE: 2 OF 3



NOTE: PAVING STONES TO BE PLACED ALONG CART PATH PERIMETERS TO ALLOW FOR FIRE TRUCK ACCESS

PROPOSED FELLOW CABIN (6)  
2 HALVES / 3 BEDROOMS EACH

PROPOSED WELL AND  
UTILITY BUILDING

NW/16

CW/16

CART PATH

CART PATH

PAVILION

PROPOSED  
ACCESS ROAD

UPPER HOBACK CR 23-174  
CENTERLINE

BOX CULVERT  
UNDERPASS

BICYCLE / CART PATH

~2,050 LF FORCE  
SEWER MAIN

60' CONTIGUOUS STRIP

CW/16

**PLAN VIEW**  
SCALE: 1" = 150'



**JACKSON FORK RANCH  
RESORT & CABIN CONCEPTAL LAYOUT**  
-PLAN VIEW-  
LOCATED IN  
SURIETTE COUNTY, WYOMING

**RIO VERDE  
ENGINEERING**  
PINEDALE, WYOMING  
(307) 367-2826  
rioverde@wyoming.com

DESIGNED BY:  
DRAWN BY: MTJ  
CHECKED BY:  
DATE: 10/6/21  
REV:  
JOB NO: 4474  
PAGE: 3 OF 3